



No pain

precisely peel

Cold ablation

All Skin type

Dermatology. Cosmetics.
Gynecology



ELISPURE

2940NM ERBIUM YAG LASER SYSTEM

Why ElisPure 2940nm ?

ElisPure is a cutting-edge choice in precision medicine and high-end aesthetic medicine. Its core advantage lies in its unique 2940nm wavelength, precisely at the absorption peak of water. This allows the laser energy to be absorbed with extremely high efficiency by water in biological tissues, achieving submicron-level precision ablation. It vaporizes target tissue layer by layer with almost no thermal damage, ensuring controllable treatment, excellent clinical results, and a very short recovery period.

Whether used for skin resurfacing to induce perfect collagen regeneration or for minimally invasive surgery to achieve a bloodless field of vision, erbium lasers, with their unparalleled precision and safety, have become the ultimate tool for professionals with stringent requirements for efficacy and detail.

Key Advantages

- ⊛ Minimal skin damage.High-precision, tissue-selective treatment
- ⊛ Suitable for all skin types and skin tones
- ⊛ Intuitive and easy-to-use parameter selection
- ⊛ Minimally invasive, safe, and with a short recovery period
- ⊛ High patient comfort and satisfaction



Applications



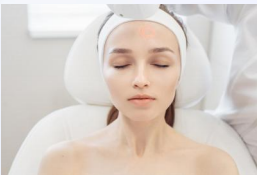
Applications



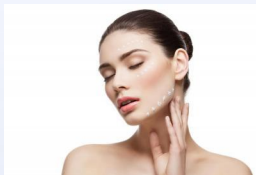
Superficial epidermal pigmented lesions



Scar treatment



Skin ablation



Skin regeneration



Gynecological treatment

Treatment Head



R11 Handpiece
Spot Size: 2-3mm



R12 Handpiece
Spot Size: 4-5mm



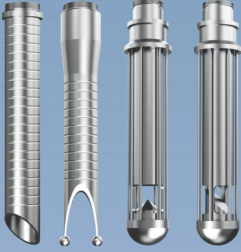
R13 Handpiece
Spot Size: 6-7mm



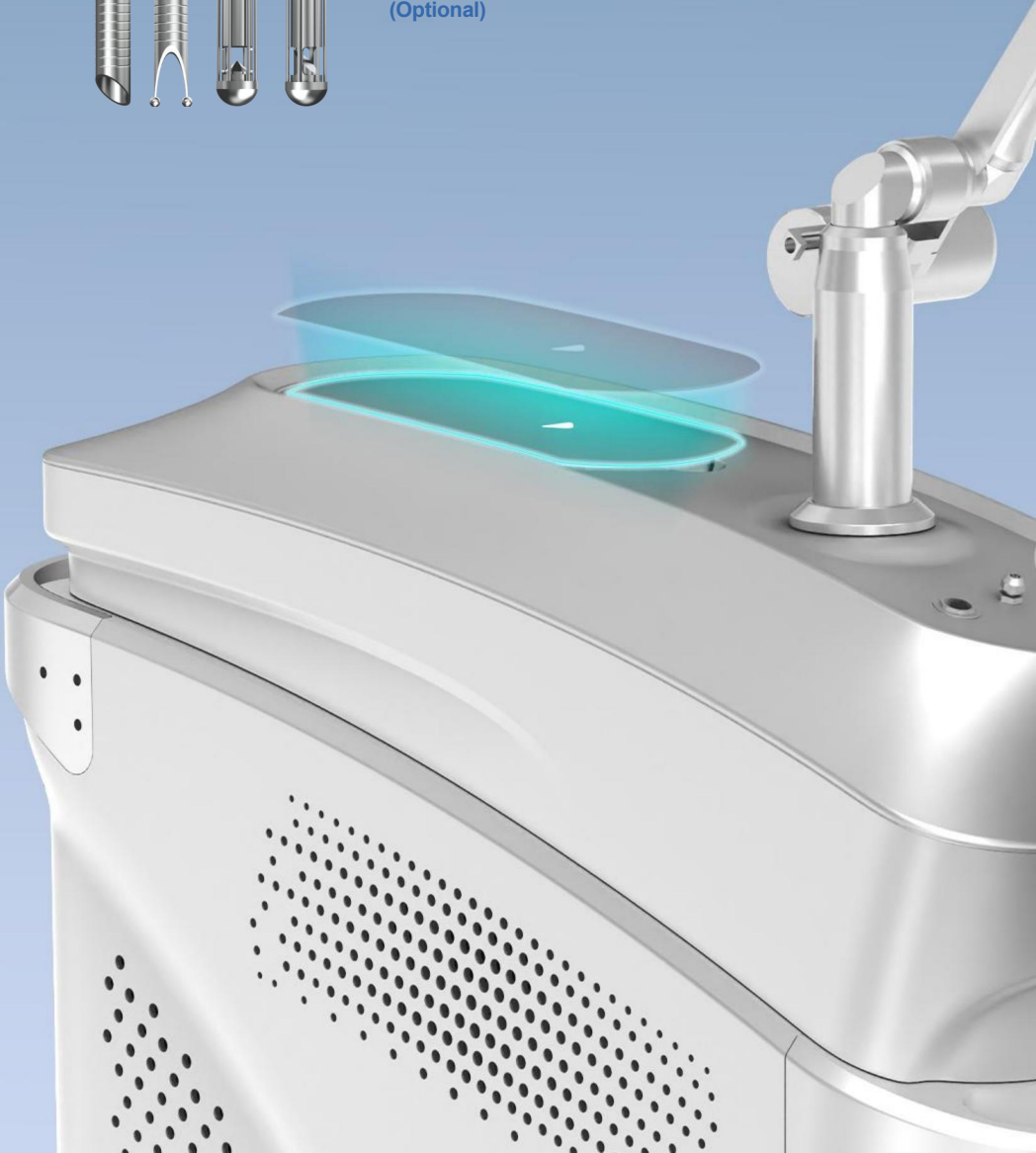
cellular head
(Optional)



Scan head
(Optional)



Gynecological
Treatments
(Optional)





User Operation

- 12.1-inch color LCD touchscreen
- Android operating system. Allows for user profile storage and rapid system upgrades.
- Intuitive and easy-to-use menus, suitable for both beginners and experts.
- Multiple adjustable counters provide optimal overview.
- Warm background enhances contrast and makes colors more vibrant.

Parameter



Wavelength

2940nm

Pulse Width

100-1500um

Energy Max

3J

Fluence

95J/cm²

Frequency

1-10

Spot Size

R11 2-3mm R12 4-5mm R13 6-7mm
Cellular head 7mm Scanner 20*20mm

Power

3400W

Dimensions

95*43*104CM

Weight

115KG

Screen Size

12.1 Inch