

LUMIGLAM PRO

GREAT MIX FOR SKIN
TREATMENT EXPLORING



LUMIGLAM PRO

1927+1550NM

Dual wavelength Fractional Laser

- ◆ Solve pigmented skin problems
- ◆ Improve skin texture, reduce pores, improve wrinkles
- ◆ Repair acne marks and mild scars
- ◆ Hair regrowth



1550 / 1927 System

➤ Dual wavelength

Combining 1550nm and 1927nm, double wavelengths can combine the effects of two lasers, and the clinical application range is wider

➤ Roller handle

The roller can do treatment for the hair regrowth and face treatment



◆ Application of 1550nm laser in dermatology

Skin rejuvenation:

Improve fine lines and wrinkles, and enhance skin elasticity.

Acne scar treatment

Reduces depressed scars by stimulating collagen regeneration

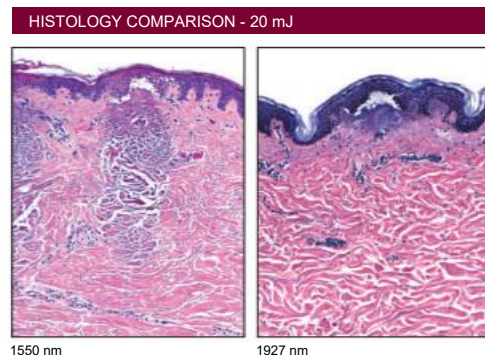
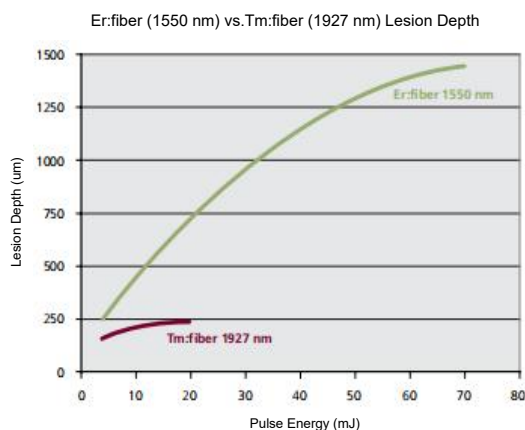
Pigmentation improvement

Lightens spots and evens out skin tone, which is clinically significant in the treatment of melasma

Shrink pores

Shrinks pores and improves skin texture

◆ Comparative analysis of 1927nm and 1550nm in treatment depth



H&E staining illustrating non-ablative deep treatment with the 1550 nm Erbium fiber laser and non-ablative superficial resurfacing with the 1927 nm Thulium fiber laser

◆ What is LumiGlam Pro?



- ◆ Address both deep and superficial resurfacing: special system to feature dual fiber laser technology
- ◆ Improved scanner design increases procedure speed by 25%.
- ◆ continuous motion tracking system delivers safe uniform treatment with consistent results.
- ◆ Intelligent touchscreen interface and precise dosimetry allows physician to easily select the optimal treatment settings.
- ◆ Treatment versatility: Treatment of a variety of conditions on all skin types anywhere on the body

◆ Principle of LumiGlam Pro Treatment

Er:Glass vs Thulium vs CO2

non-ablative
Er:Glass 1550 nm



- Thermal effect to dermis
- Inducing protein denaturalization
- Mainly for skin rejuvenation
- Less downtime

non-ablative+ sub-ablative
Thulium 1927 nm



- Target to the DE junction between epidermis and dermis
- Coagulation and denaturalization
- Mainly for whitening skin
- Less downtime

ablative
Co2 10600 nm



- Skin resurfacing and rejuvenation
- Longer downtime than non-ablative

Therapeutic mechanism



Target to the DE junction between basal layer and upper dermis



Fractional laser irradiation

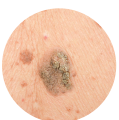


Ablation of lower part of epidermis with coagulation effect on the upper part of dermis and without damage to the stratum corneum



Occuring micro crusts at the surface of skin. Crusts will preserve any infection and PIH.

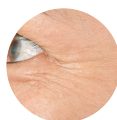
◆ Indications of LumiGlam Pro Treatment



Epidermal Pigmented Lesions



Enlarge pores



Fine wrinkles



D-E Junctions Pigmentation



Acne Scars



Uneven Skin Texture /Coloration



Hair Loss

Handle and function



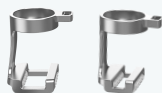
Fractional Handle



The fractional handle has 3 replaceable treatment heads, with sizes of 6*6, 12*12 and 20*20, which are convenient for fine treatment of large, medium and small areas.



Roller Handle



two sizes of replaceable treatment heads, 15*3 and 15*8, suitable for hair growth treatment, can also be used for facial treatment, suitable for treatment of areas with low flatness, the roller helps to stretch the skin and enhance the workability



Gynecological Head

- Reshaping of the vulva
- Postpartum perineal scars
- Hypertrophy of the labia majora and clitoris Genital bleaching
- Stress urinary incontinence
- Vaginal rejuvenation
- Vaginal atrophy
- Vaginal relaxation syndrome

Interface



LumiGlam Pro rebuilds glowing, healthy and elastic skin through gentle, nonablative fractionated treatments with minimal cost of ownership and no shot limit per procedure.



Easy-to-navigate display provides valuable feedback with selectable dot space, Total Energy delivered per treatment session, Density and Interval options.



Fastest resurfacing treatment solution with bigger beam diameter and scan size (20 x 20 mm & 12x12mm). Tunable treatment, from mild to aggressive, provides customized outcomes.



◆ Appearance advantage



Intelligent identification

The handle is equipped with 5 identifiable treatment heads, which can match the treatment parameters and treat different treatment areas of large, medium and small sizes.

Fractional handle



Size:6*6mm



Size:12*12mm



Size:20*20mm

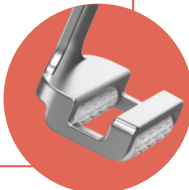
Roller handle



Size:15*8mm



Size:15*3mm



Roller handle

Disinfection Chamber

The lid here can be opened and the treatment head can be placed inside for disinfection



Machine parameters

Laser	LUMIGLAM PRO
Wavelength	1927NM+1550NM
Output(W)	15W/30W (optional)
Pulse duration (ms)	0.1-10ms
Point energy (mj) - power W* pulse width ms	15W(3mj-150mj)
Handle Piece	Fractional handle (Spot size: 6*6,12*12,20*20) Roller handle (Spot size: 15*3,15*8) Vaginal handle(optional)
Screen size (inch)	13.3" Android
Voltage	110V/220V
Machin Size (mm)	500*400*1000mm
Net Weight (kg)	35kg
Package size (mm)	750*550*1090mm
Gross weight (kg)	90kg
Total Watt	600W