



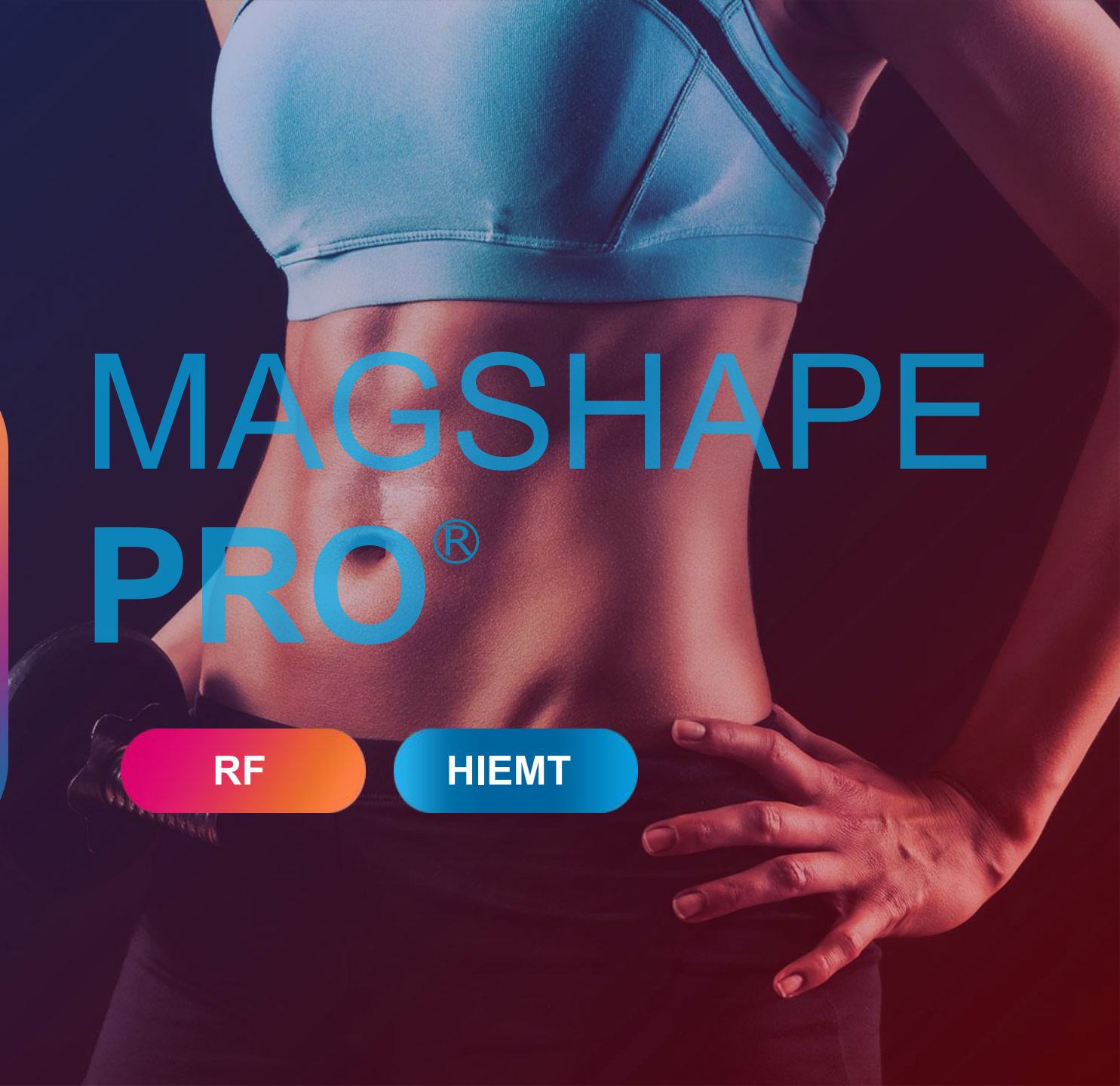
The
one

inBody
shaping

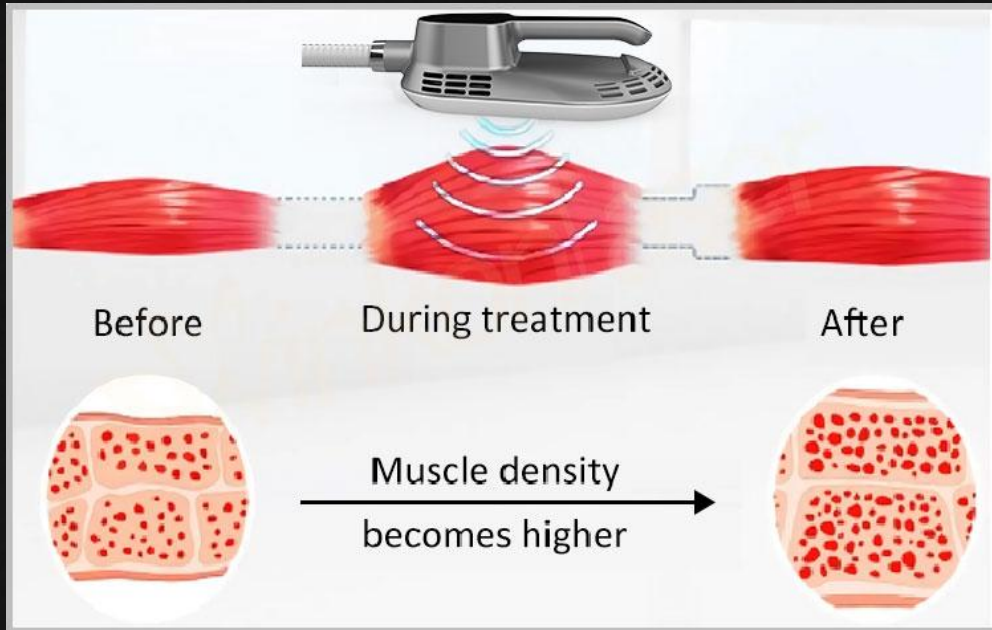
MAGSHAPE PRO[®]

RF

HIEMT



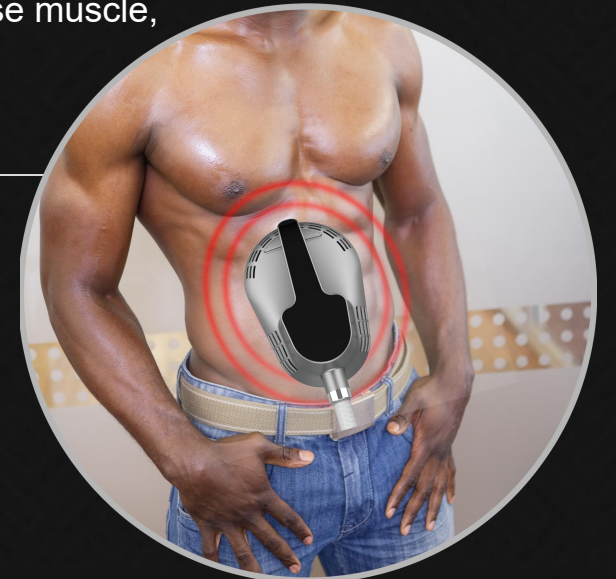
HIEMT PRINCIPLE



Through HI-EMT (high energy focused electromagnetic wave) technology, autologous muscles can realize the ultimate training of continuous expansion and contraction, so as to deeply reshape the internal structure of muscles. It promotes the growth of myofibrils (muscle enlargement) to produce new protein chains and muscle fibers (muscle hyperplasia) and increases muscle density and volume through training.

Under Hi-EMT technology, the 100% limit muscle contraction movement can cause a large amount of fatty acid decomposition, fatty acid from the triglyceride decomposition outflow, in the fat cell a large amount of accumulation. Fatty acid concentration is too high, allowing adipocyte apoptosis, in a few weeks by the body normal metabolism out of the body.

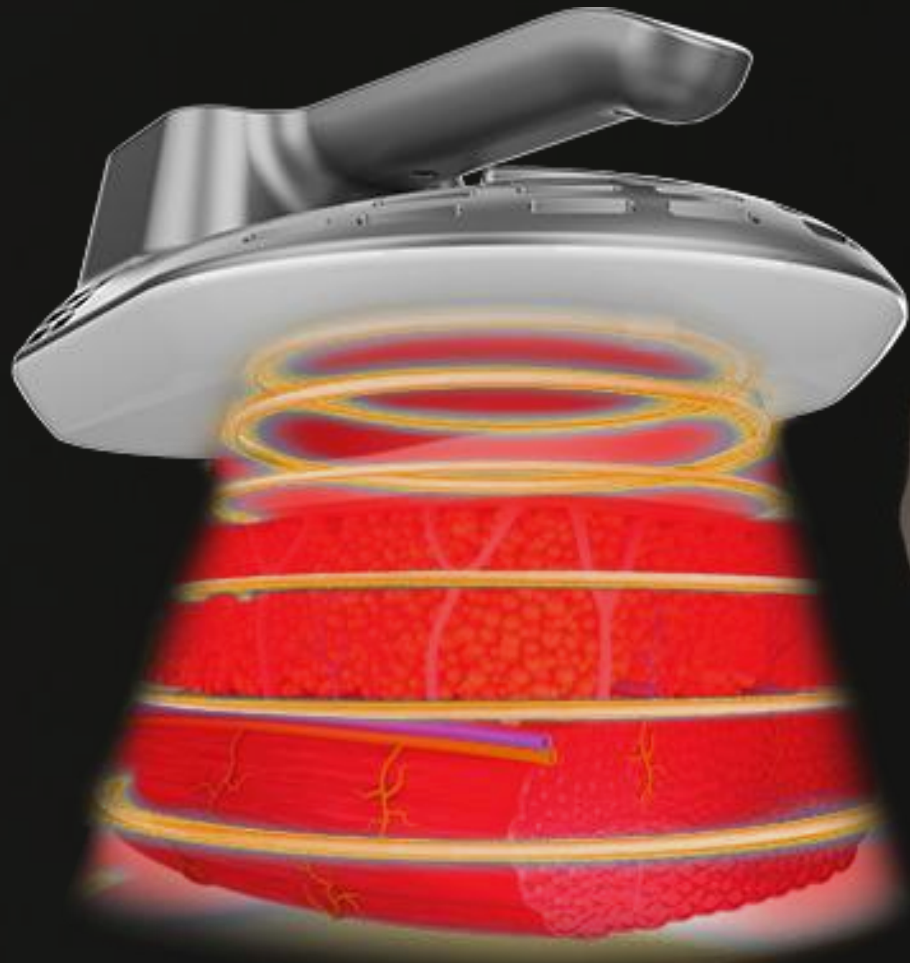
So HI-EMT can strengthen and increase muscle, at the same time accomplish reducing fat effectively.



A specific range of frequencies that do not allow the muscle to relax between successive stimuli, forcing the muscle to remain contractive for several seconds. Muscle formation occurs when muscle tissue is repeatedly exposed to these high load conditions.

TWO TECHNOLOGY IN ONE

HI-EMT & RF



Magshape Pro is world-first treatment that combines HIEMT technology with RF.

HIEMT: Electromagnetic fields trigger thousands of muscle contractions with high intensity, which forces the muscle fibres and cells to multiply and grow at a much faster rate, helping patients to significantly increase their muscle volume.

RF: While radiofrequency heat can burn and destroy fat cells.

The radiofrequency heating prepares muscles for exposure to stress, similar to what a warm up activity does before any workout. It boosts blood supply to muscles so they build up stronger and faster.

It also heats layers of subcutaneous fat to a level that causes apoptosis and physically break down. Then damaged fat cells will be slowly removed by body metabolism in a natural way, leading to permanent fat removal.

The radiofrequency process also helps to improve skin laxity while tightening up the skin at the same time.



MAGSHAPE PRO

- Magshape is the only procedure which helps patients build muscle and sculpt the body at the same time. Feel like an intensive exercise, good for health.
- It is suitable for shaping, gaining muscle, dissolving fat, exercising vest lines and raising hips.
- It provides the world's first non-invasive hip lifting procedure. Non-invasive and requires no recovery time or any pre/post treatment preparation.
- Based on high-intensity focused electromagnetic energy. A single Magshape session causes thousands of powerful muscle contractions which are extremely important in improving the tone and strength of your muscles.
- It works by super-maximal contraction: muscle tissue is forced to adapt to this extreme condition. It responds by a profound transformation of the internal structure, which leads to muscle accumulation, tension, conditioning and burning fat.
- By reducing abdominal fat and at the same time building a muscle foundation under the fat, it helps patients achieve a slimmer and more athletic body contour.
- The recommended treatment plan: 30 minute treatment with minimum of 4 sessions scheduled 7days apart. Your provider will help you create a treatment plan tailored to your specific goals.

30 = 20.000

Mins Treatment

Workouts

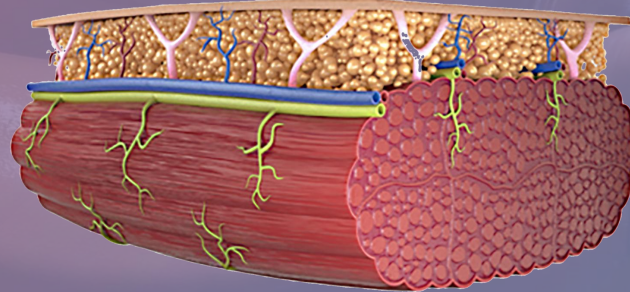
RF & HIEMT+
for Fat & Muscle

LESS

Fat

+25% MORE
Muscle
on average

LESS **-30%**
Fat



Muscle MORE

COMBINED 30-MIN.
TREATMENT

MORE LESS
for



ADVANTAGE

- Building muscles and burn fat together
- Non-invasive hip lifting
- Suitable for everyone-no anesthesia-no surgery
- Short-term treatment, one time 30 minutes
- Only 4 sessions are required between 5-10 days
- Feels like an intensive exercise
- Safe without downtime
- The result is immediate, but it will be noticeable after two to four weeks.
- Muscle mass increased by an average of 25%
- Average fat loss 30%



SPECIFICATION



Specification

Magnetic wave (energy)	0-7tesla
Total power	4700W
RF Power	400W
Frequency	F1:1-10Hz F2:1-100Hz
pulse width	300us
Mode	model-I (Sport mode) model-II (Gentle mode) model-III (Professional mode)
screen	10.4 inch
Treatment handle	I-B1 、 II-B2
machine size	1200mm*360mm*520mm
package size	1150mm*540mm*840mm
Net weight	63kg
Gross weight	96kg

magshape multifunctional handles



USING FOR:

Belly



Buttocks



Thighs



USING FOR:

Thighs



Arms

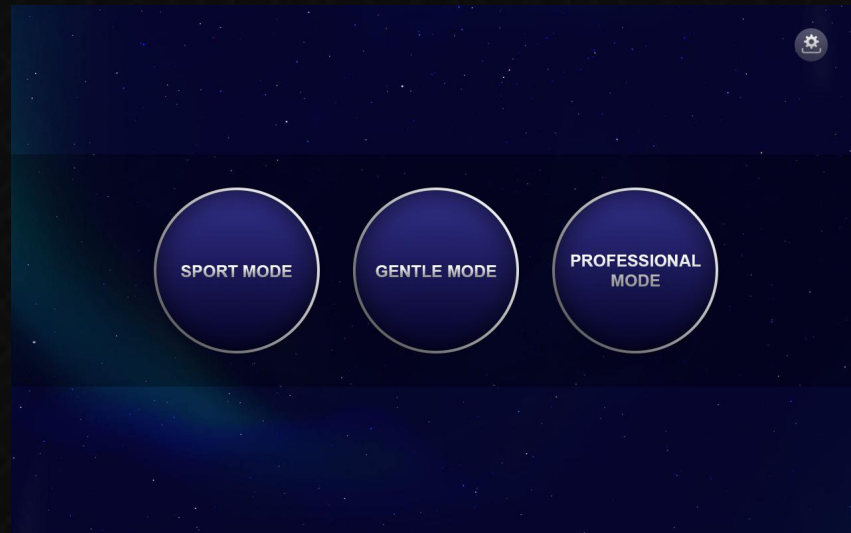


Legs



SYSTEM MODE

3 WORK MODES



Sport Mode



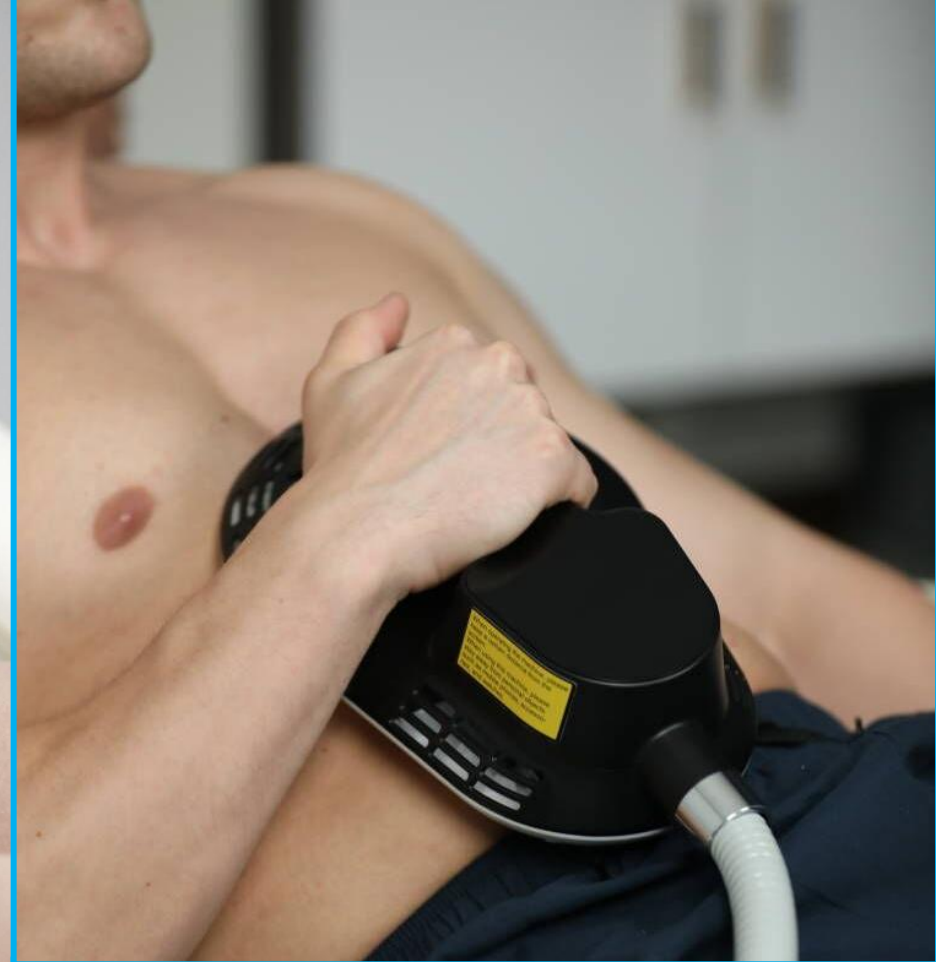
Gentle Mode



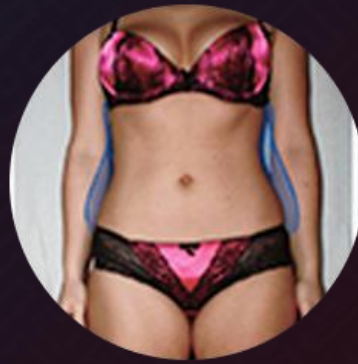
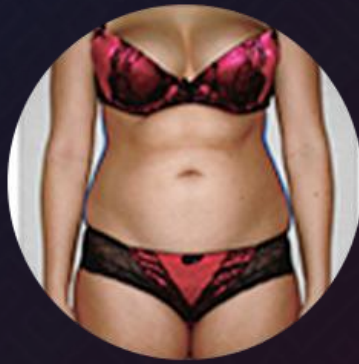
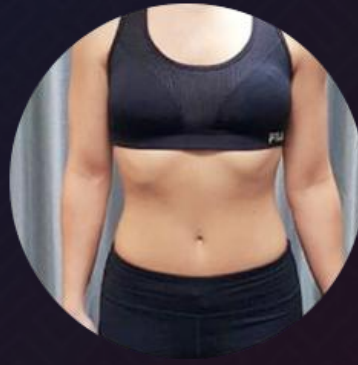
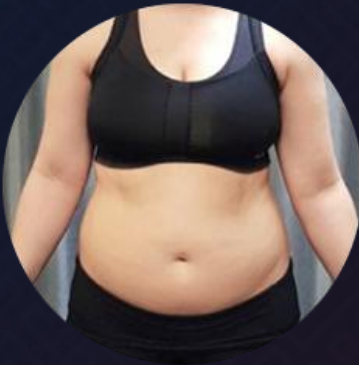
Professional Mode



User experience



BEFORE & AFTER



THANKS

