

Unique PatrixR

Revolutionary Technology Multi-Dimensional RF Device



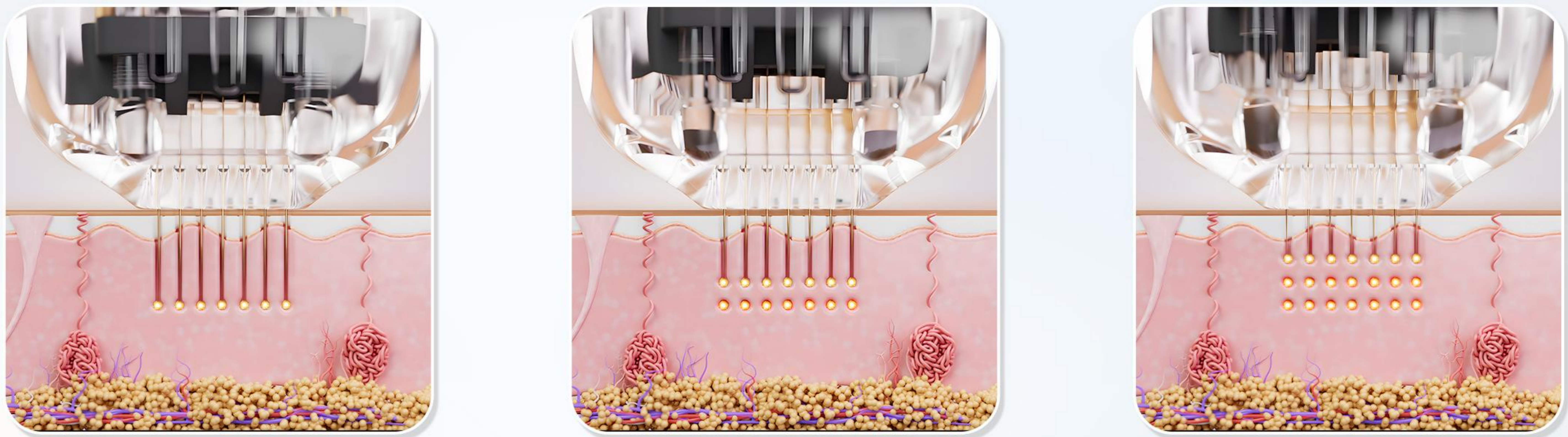
Multiple depths and multiple energy settings in one pass.

The PatrixR creates an entirely new category of radiofrequency system.

The system can transfer RF energy into dermis by 3 depths with a single insertion, multi-layer deliver the right amount of energy at the precise depth, every time.

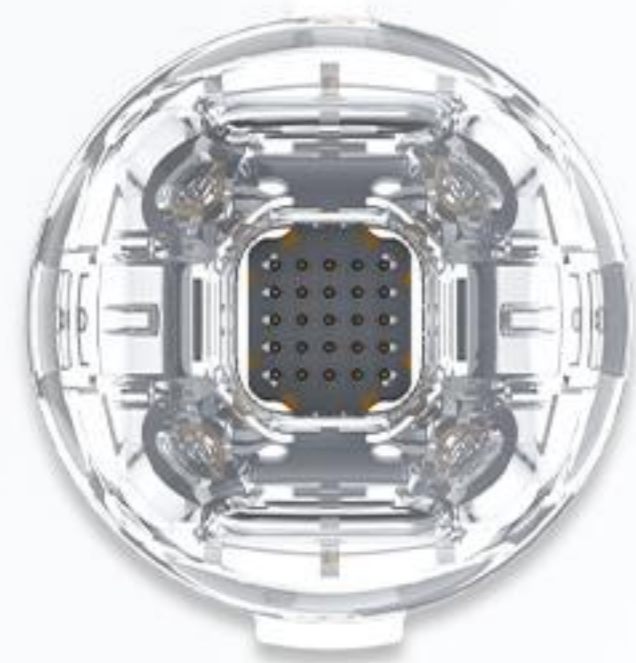
Using a single cartridge for 1, 2, or 3 depths, this 3-in-1 capability eliminates the need for multiple treatment passes and:

- Deliver multi-layer tissue heating with one insertion.
- Reduce treatment time with single-pass technique.
- Improve patient experience and downtime.



- Three customisable depths (0.5 – 4mm) and energy (7 Level) in a single insertion.

PatrxR Applicator - Skin Resurfacing



R-25

Gold Plating

Needle is durable and also have high Biocompatibility by applying Gold Plating. Patient with Metal allergy could also use it with not concerning Contact Dermatitis.



R-49

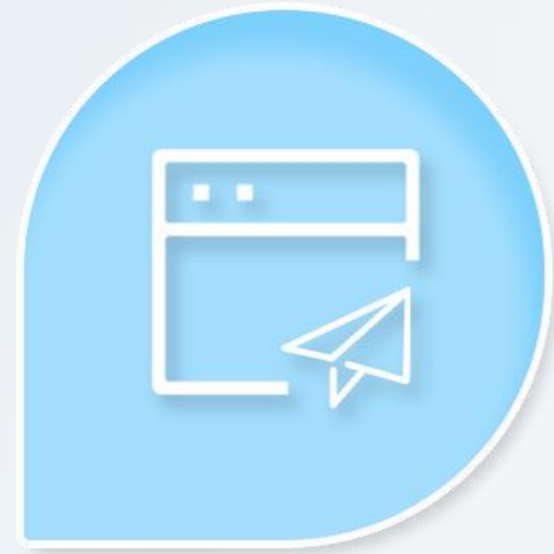
Needle Depth Control 0.5-4.0mm [0.1mm Step]

Operate epidermis layer and dermis layer by controlling the needle depth in unit of 0.1mm.



The PatrxR applicator delivers short-pulse RF energy to the skin by the probe of R-25, R-49. The ability to sequentially target tissue on three levels at millisecond intervals to treat 3 layers of skin at a time significantly shortens treatment time, minimizes skin damage, and improves treatments uniformity, providing physicians with an anti-aging and skin resurfacing new solutions for restoration and enabling customized fractionated whole face and body treatment.

Advantages



Guiding system

- Faster, Easier, Safer, parameter recommendation



Automatic energy calculation system

- Accurate energy output controllable



FractionalR Applicator- Skin Corrector

- --Non invasive
- --No down time
- --Treat facial wrinkles
- --Improve superficial skin tone and texture.



F-3*3

- Eyes
- Nose Area



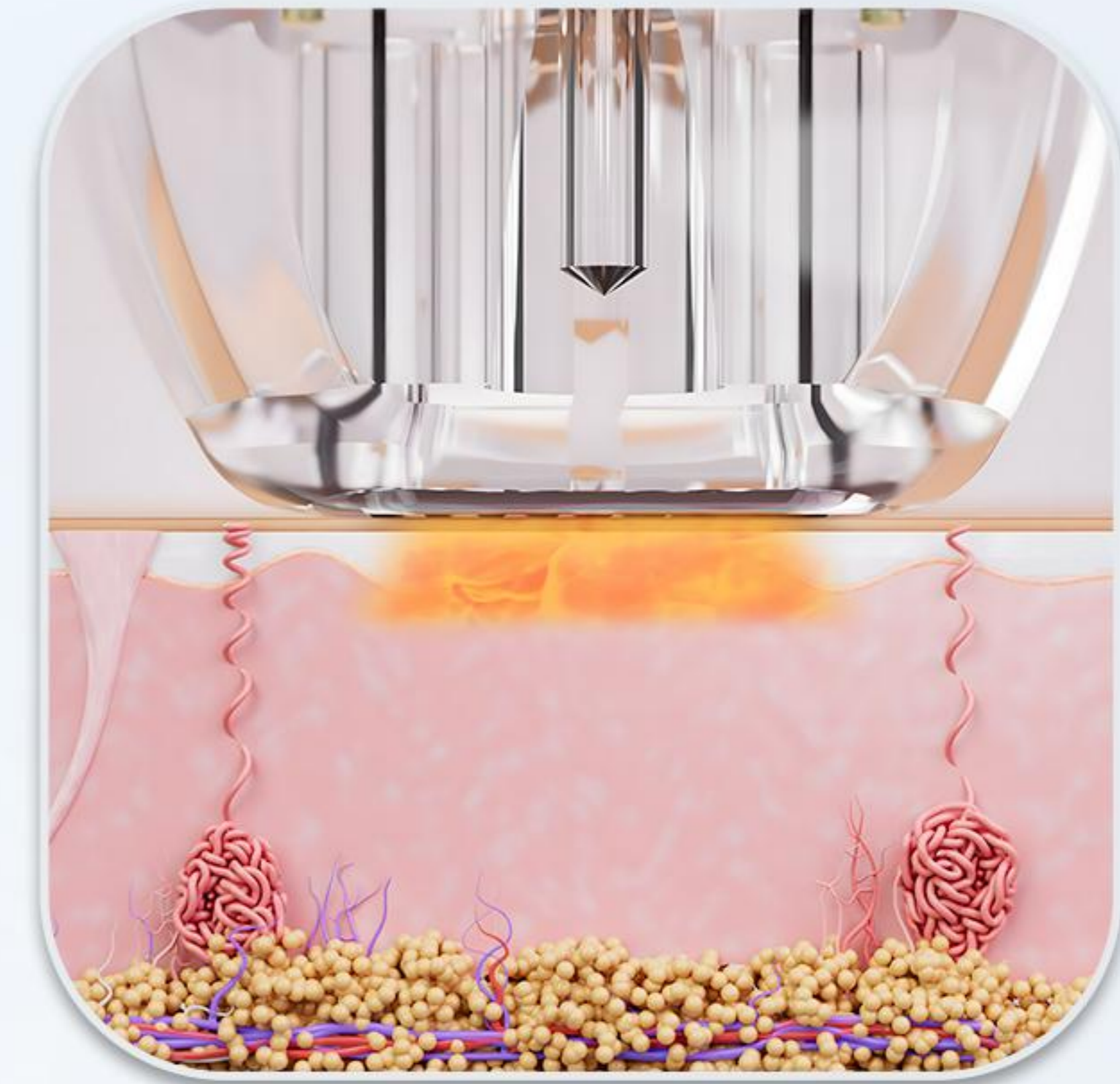
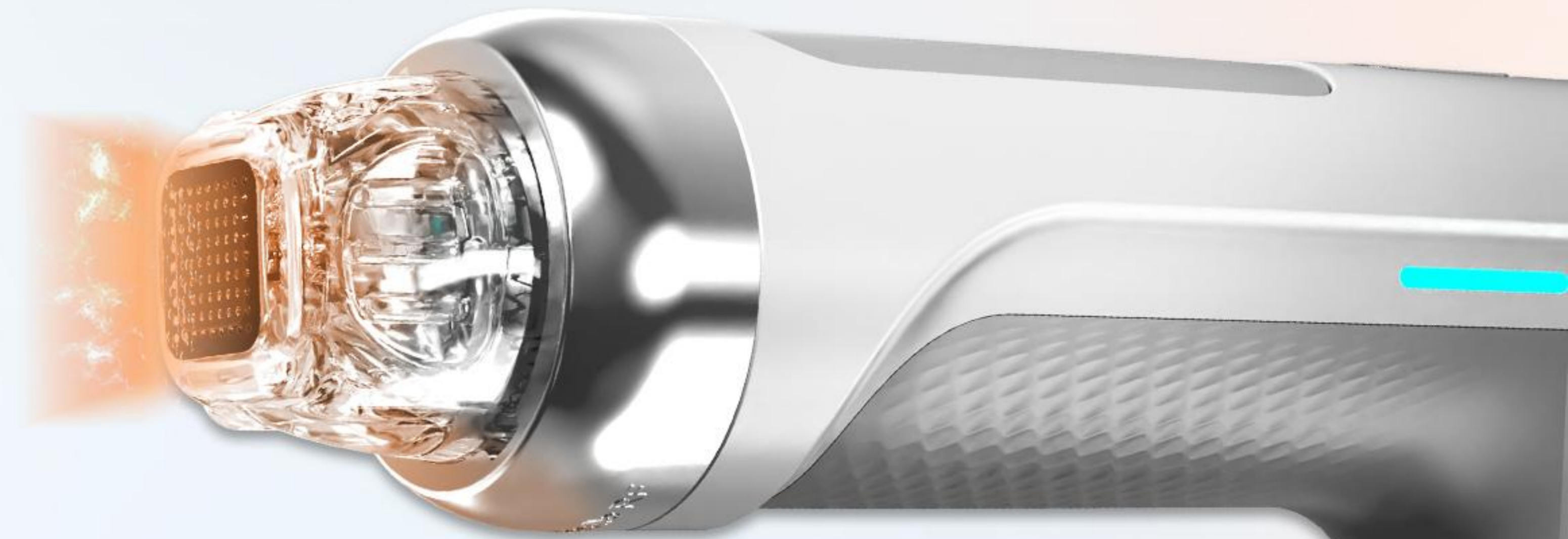
F-5*5

- Face Area



F-9*9

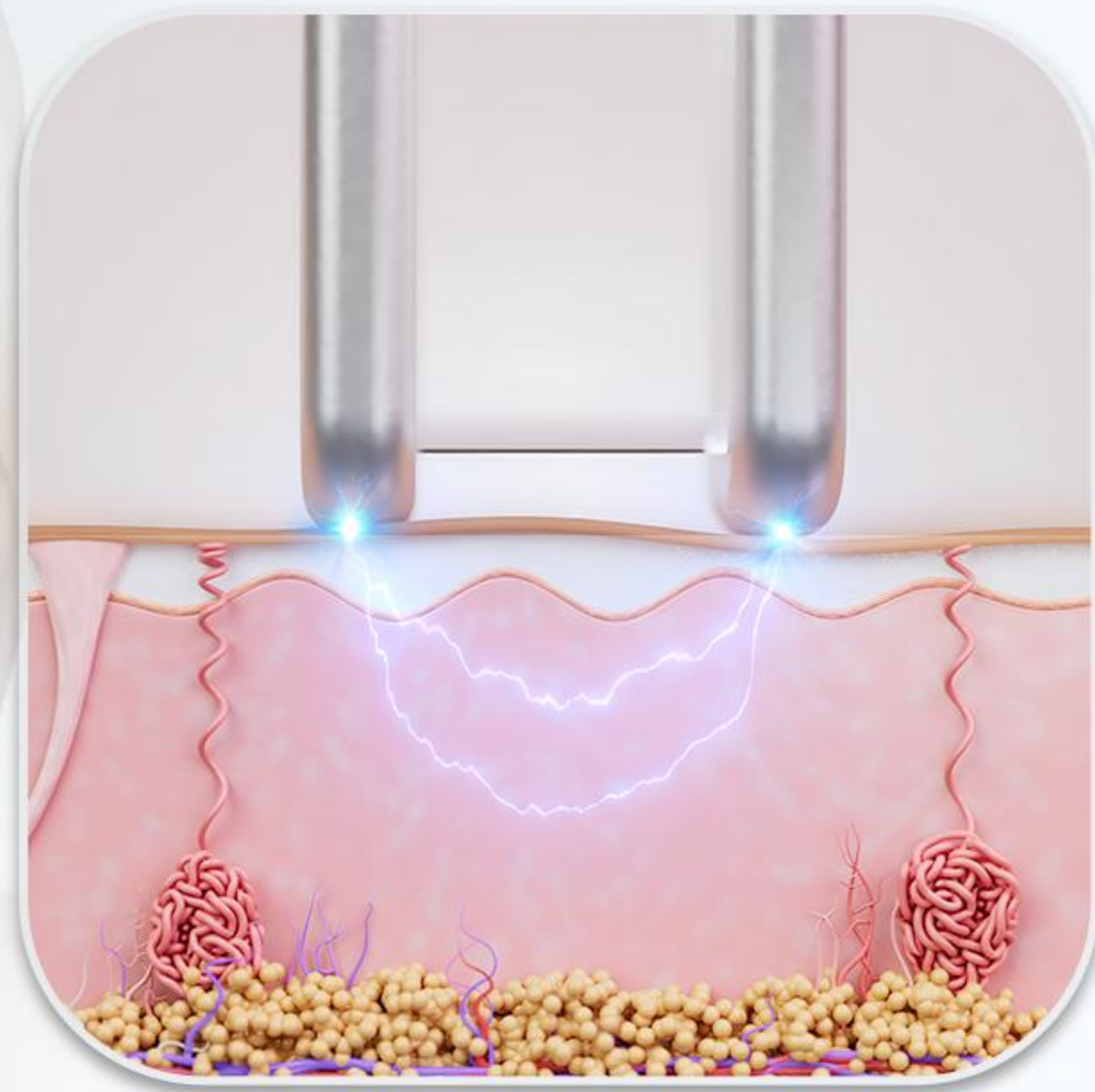
- Body Area



The FractionalR applicator refer non insulated treatment, it stimulates new collagen growth and resurfaces the skin by delivering bipolar RF energy.

This treatment effects in smoother skin and the reduction of facial wrinkles.

IceRAppliator- Skin Maintaining



- Infrared Light + Bipolar RF
- Collagen stimulation
- Immediate and long-term
- wrinkle improvement



Ice radio frequency skin tightening has an original intelligent epidermal cooling system. By pre-cooling the epidermis, most of the radio

frequency energy is pushed to the deeper dermis layer, protecting the epidermis from burns while concentrating the heat energy in the bottom layer of the skin, more effectively stimulating the regeneration of collagen in the dermis.

Specification

| Handle | PatrxR Applicator | FractionalR Applicator | IceR Applicator |
|--------------------------|--|--|---|
| Energy Level | 1-7 Level | 1-7 Level | RF:1-12J 940 lamp power: 5W Cooling chip: 3.7V10.5W |
| Pulse Width | R-25: 30- 250ms R-49: 30-400ms | 30-1000ms | 30-1000ms |
| Needle type | Insulated | Non invasive | Non invasive |
| Spot size | R-25pin:6.4*6.4mm R-49pin:9.2*9.2mm | F-3*3 : φ9.8mm F-5*5 : φ9.8mm F-9*9: 15.8*15.8mm | 8*8mm |
| Needle Diameter | 0.2mm | | |
| Automatic identification | YES | YES | |

| | |
|--------------------------|-------------------|
| Power | 400W |
| Screen (inch) | Android 13.3 inch |
| Frequency | 2MHz |
| Energy RF | 0-50W |
| Pulse Duration | 30-1000ms |
| Tips | Insulated |
| Needle Depths | 0.5 mm-4mm |
| Voltage | 110V/220V |
| Machine size | 450*345*1035(mm) |
| Machine weight | 30kg |
| Machine packaging size | 730*625*1190(mm) |
| Machine packaging weight | 65kg |



Advantage

Android

Smarter, easier to operate



Multi-dimensional RF operation

Save time



Ice radiofrequency skin tightening

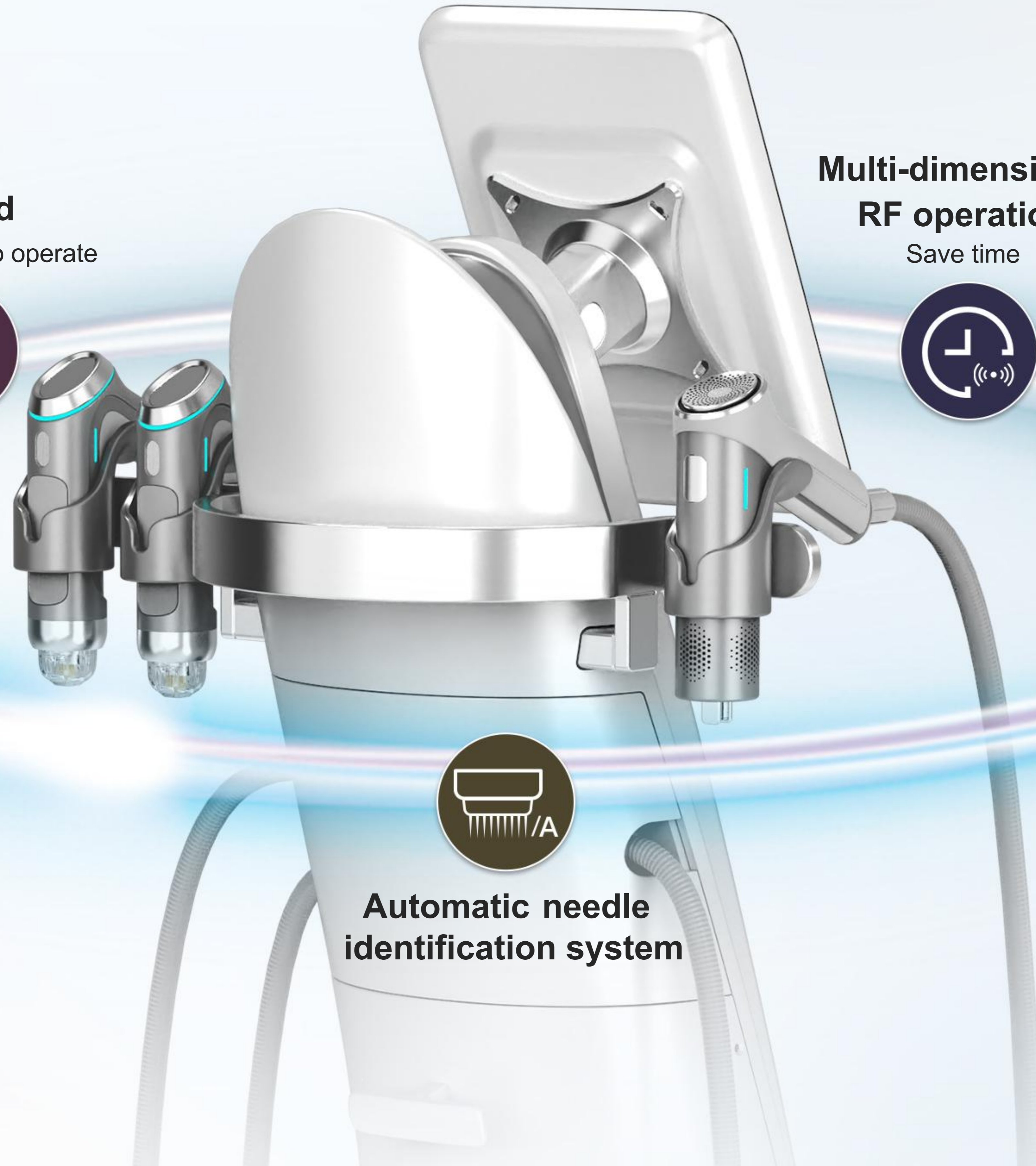
Remove wrinkles



Automatic energy calculation system



Automatic needle identification system



The background of the slide is a blurred photograph of a group of people, likely a team, smiling and looking towards the camera. The image is out of focus, with soft colors and indistinct shapes, creating a warm and positive atmosphere. The word "Thanks" is centered over this background in a large, bold, dark blue font.

Thanks