

ANDROID



80w



*Fractional Laser*

# CO<sub>2</sub> Metal RF Tube

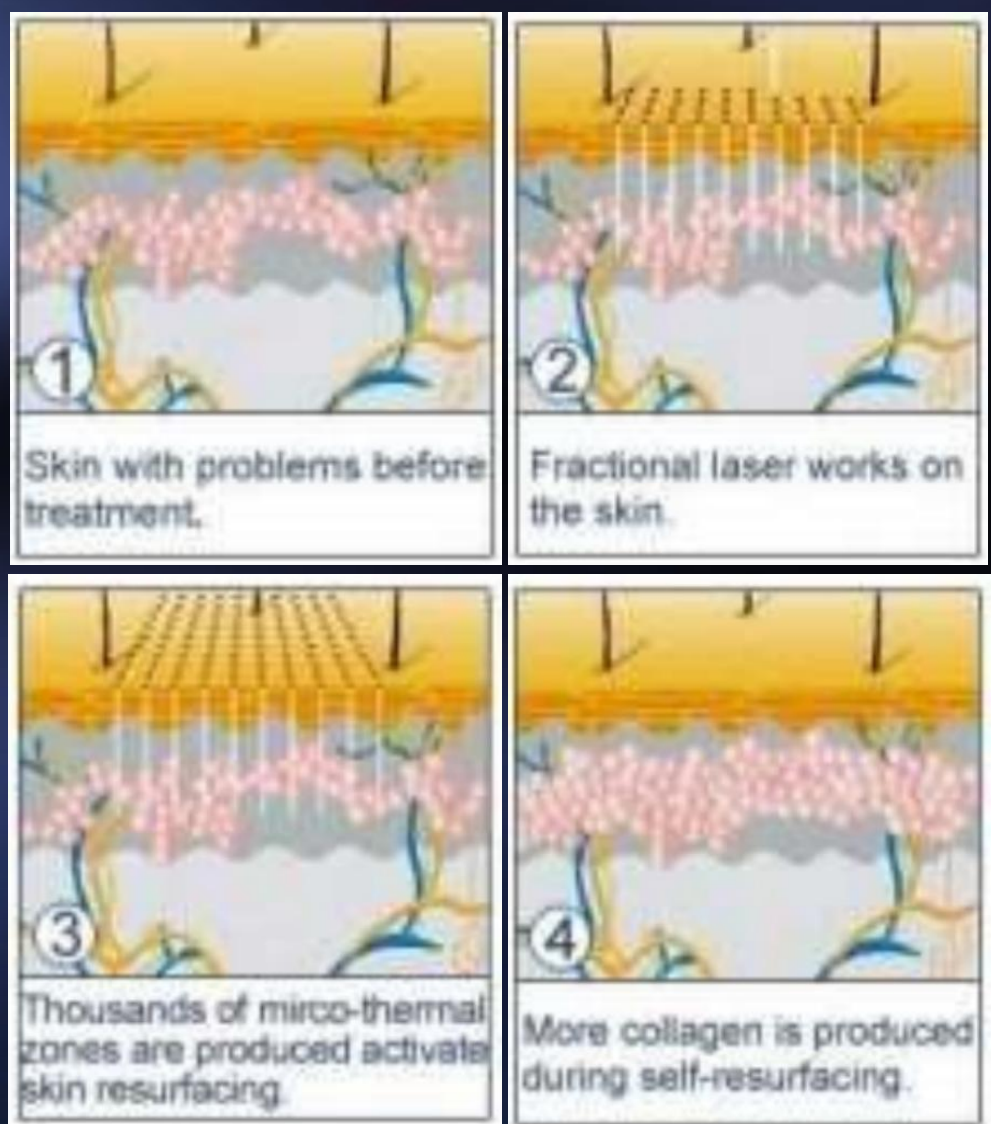
Fractional Mode • Ultra Mode • CW Mode

# Principle

The CO2 laser beam heats and vaporizes the skin tissue, instantly removing the superficial layers of the skin. Each fractional micro spot creates a thermal zone. Intact cells around the treated area help the healing process. This process induces cell regeneration.

The contraction is immediate and the structural improvement of the skin you start to see about one week after the procedure.

Delivers multiple arrays of 10600nm laser beam to the skin by fractional scanning, forming a burning zone of an array of laser points on the epidermis. Every laser point, consisting of single or several high-energy laser pulses, penetrates directly into dermis to form a tapered hole, produces the effect of vaporization, solidification and carbonation for the biological tissue, enseat small blood vessels, and decrease the bleeding. The high-energy laser also stimulates the proliferation and reorganization of collagen tissue, while the contraction of tapered holes tighten the skin, making it more fair, smooth, delicate and elastic.



# Application

Ø Sun damaged skin

Ø Surgical scars

Ø Large pores

Ø Skin Rejuvenation

Ø Dyschromia

Ø Nevus

Ø Fine lines and wrinkles

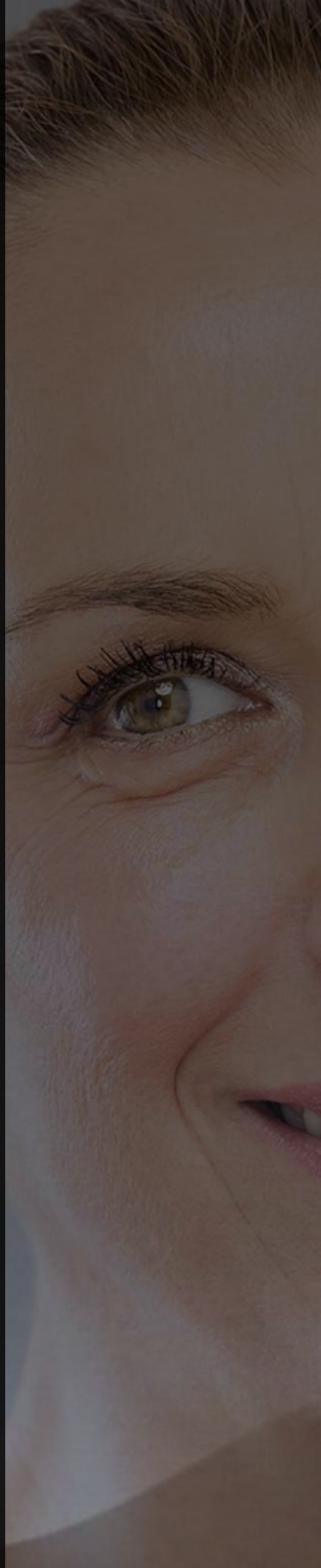
Ø Stretch marks

Ø Acne scars

Ø Scars

Ø Photoaging Skin

Ø Warts



# Advantages



## Metal RF Tube

- Less recovery time
- Long time to use ( 7-10 years)
- Use air cooling, no need maintenance
- Energy is even in every dot

## With 7 Operation Mode

Adjustable Size And Density



Healing zone selecting matches to each patient's needs



## Fractional Head

**120µm Spot**

Scars  
Deep Wrinkles  
Tightening

**300µm Spot**

Large Pores  
Skin Texture  
Luminosity

**1000µm Spot**

Skin Toning  
Texture  
Luminosity

## SURGICAL HANDPIECES

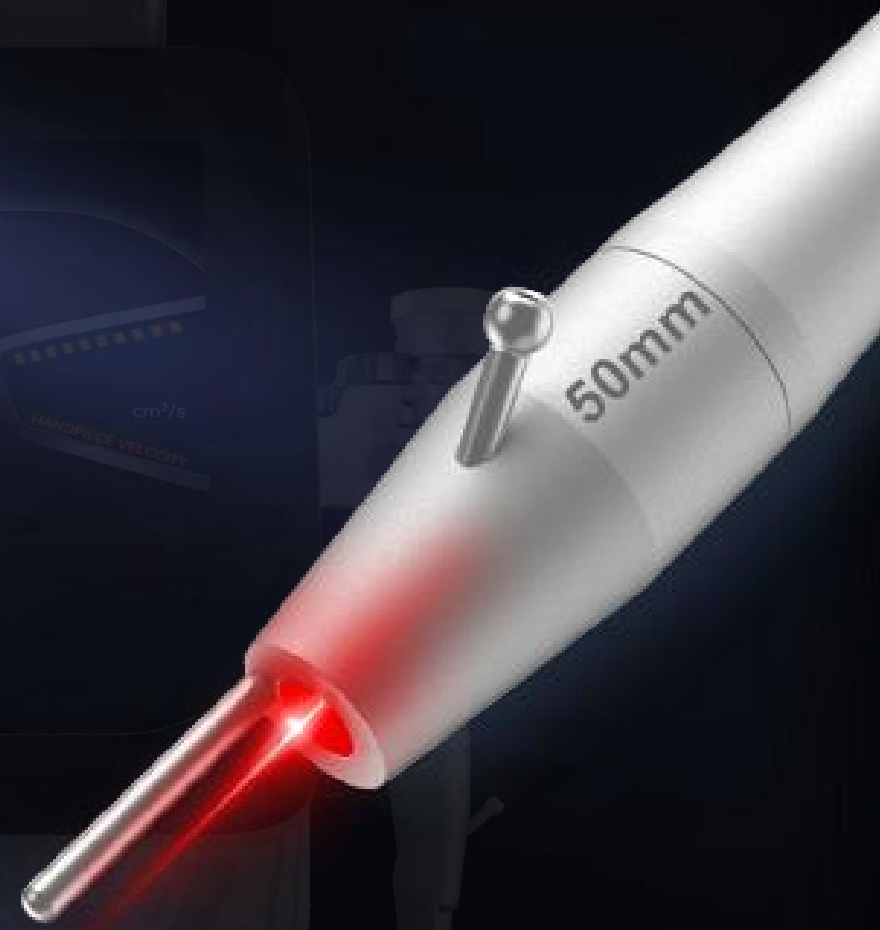
Zoom 0.2a 10mm Handpiece

Micro F50 Handpiece (optional spot 500µm)  
Micro F100 Handpiece (optional spot 1000µm)



## Cutting Head

**f=50mm**



## Cutting Head

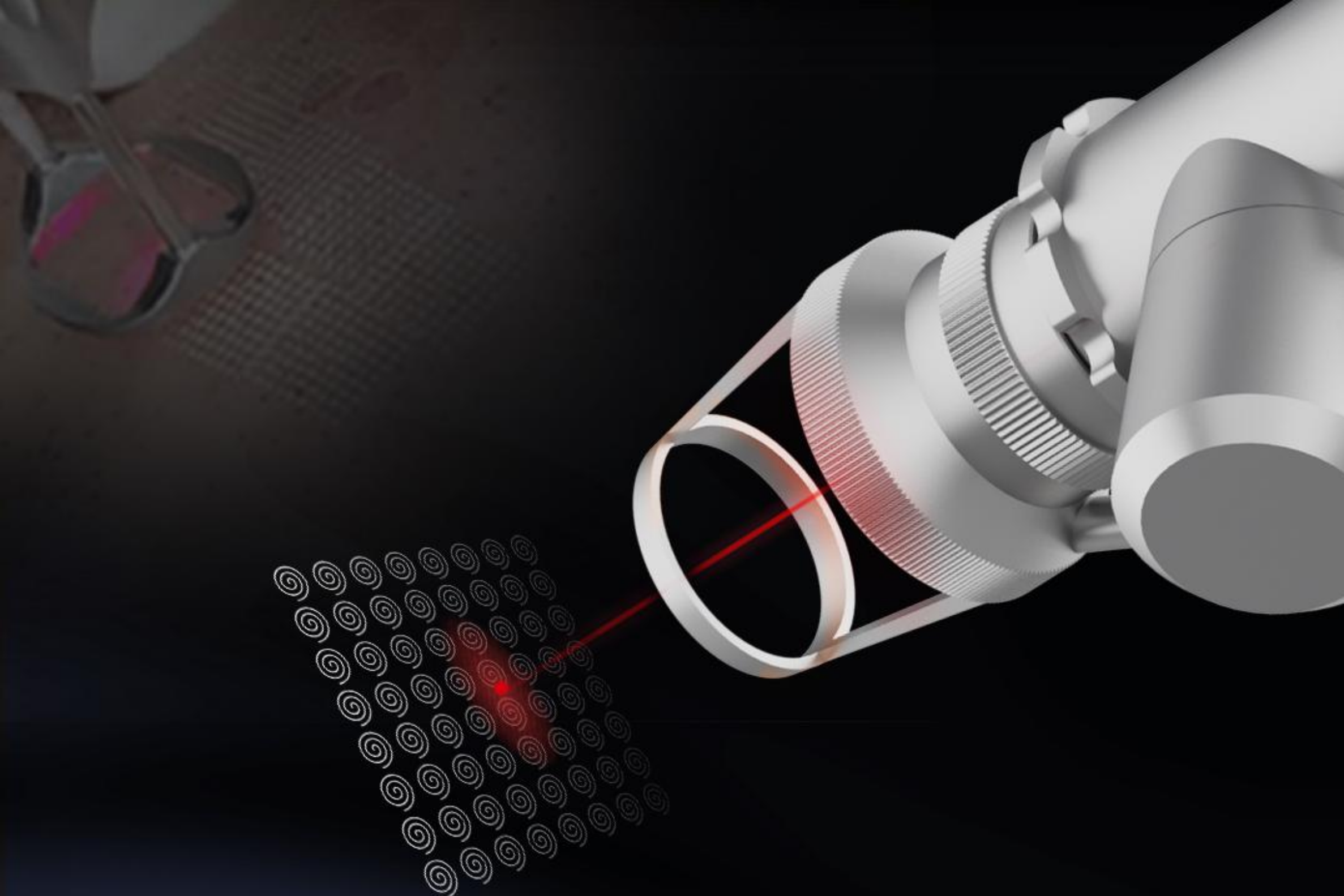
**f=100mm**



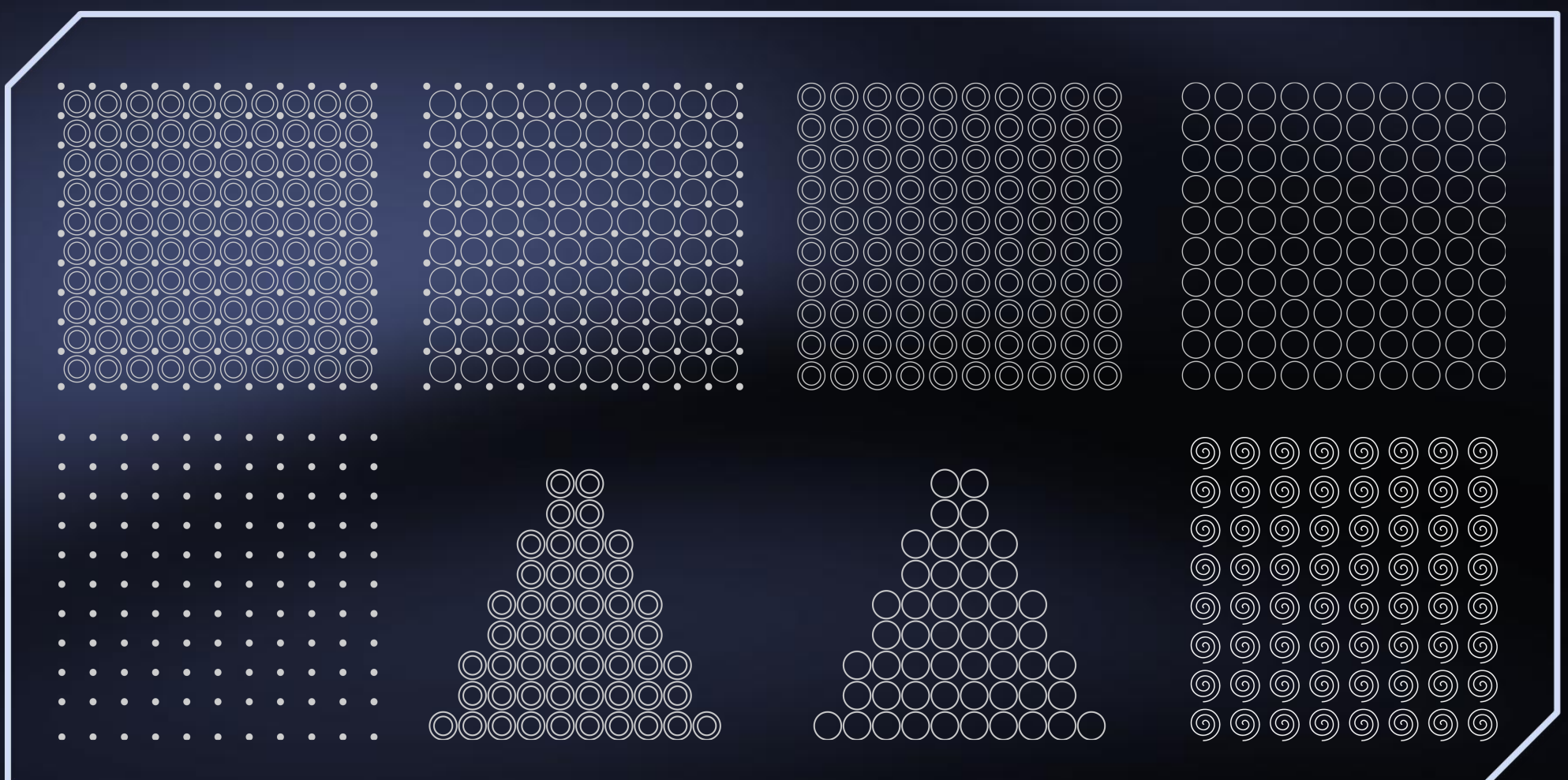
## Cutting Head

**f=75mm**





**Core point: MIX Mode (Super pulse CO2 laser)  
non-ablative, no down time**



Super Pulse CO2 Plus system gives you the ability to treat both superficial and deep skin layers simultaneously with precision control over the intensity, pattern, and depth of ablation, with a single platform Both function can working same time and independent, all control by operator , easy for treatment .

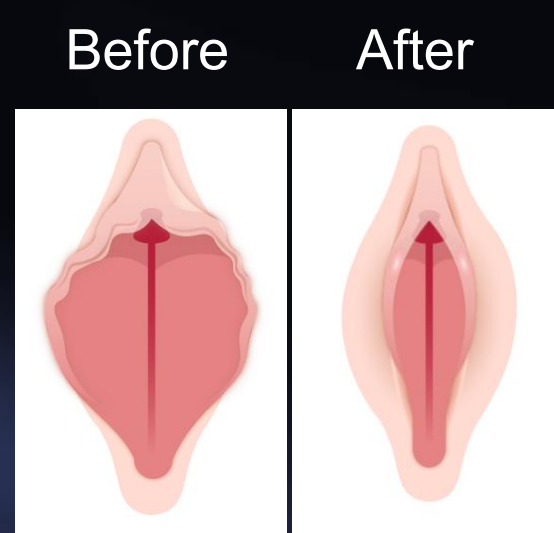
**Advantages of adding MIX Mode:**

1. Deep treatment: dot matrix deep treatment stimulates collagen production in deep skin.
2. Shallow peeling: circle mode, shallow peeling, improve shallow skin condition.
3. Increase treatment effect while reducing the probability of side effects.

# Gynecological Head

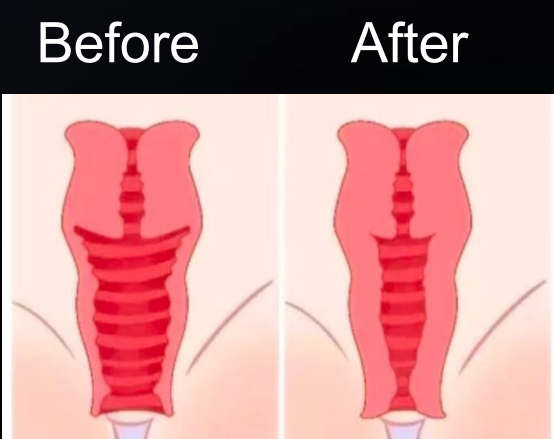


- Reshaping of the vulva
- Postpartum perineal scars
- Hypertrophy of the labia majora and clitoris genital bleaching
- Stress urinary incontinence



- Vaginal arejuvenation
- Vaginal atrophy
- Vaginal relaxation syndrome

Equipped with 180-degree conical reflector and 45-degree inclined reflector to meet the needs of different customers



COBEAM laser causes a controlled and highly precise photothermal effect into the vaginal mucosa, promoting tissue contraction and tightening and returning its natural elasticity to the vaginal canal. The laser energy delivered along the vaginal wall heats the tissue without damaging it and stimulating the production of new collagen in the endopelvic fascia.

# Parameter

Laser Type:	10.6 $\mu\text{m}\pm 0.1\mu\text{m}$
Output Power:	1-80W; 0.6~1050 mJ
Focus spot diameter:	$\leq 0.4\text{mm}$
Indication Beam:	Red Diode Laser (650nm, $\leq 5\text{mW}$ )
Transmission System:	7-Articulation Joint Spring Arm
Smoke Exhausting System:	Built-in airblow
Cooling System:	Air cooling
Environmental temperature:	5 $^{\circ}\text{C}$ ~40 $^{\circ}\text{C}$
Relative Humidity:	$\leq 80\%$
Power Supply:	$\sim 220\text{V}\pm 22\text{V}$ , 50Hz $\pm 1\text{Hz}$
Dimension:	695mm $\times$ 550mm $\times$ 1325mm
Weight:	55kg

# Before & After ➡



Before — After



Before — After



Before — After



Before — After

